

— Consider —


ONPATTRO™


(patisiran)



A new treatment for polyneuropathy in adults living with hereditary transthyretin-mediated amyloidosis (hATTR amyloidosis)

 Improvement in nerve function

 Improvement in quality of life for patients

 Personalized support throughout the treatment process

Indication

What is ONPATTRO™ (patisiran)?

ONPATTRO is a medicine that treats the polyneuropathy caused by an illness called hereditary transthyretin-mediated amyloidosis (hATTR amyloidosis). ONPATTRO is used in adults only.

Please see Important Safety Information on the following pages and accompanying Full Prescribing Information.

onpattro™
(patisiran) lipid complex injection

What is hereditary ATTR (hATTR) amyloidosis?

hATTR amyloidosis is a rare condition that can progress rapidly and can place a significant burden on you and your family

It runs in the family

hATTR amyloidosis is caused by a genetic mutation (change within a gene). Any child of a parent with this mutation will have a 50% chance of inheriting the mutation. However, this does not necessarily mean that the child will develop the condition. It's important to understand your family health history and speak with your healthcare professional about how hATTR amyloidosis runs in the family.

It affects several parts of the body

hATTR amyloidosis can affect the nerves, heart, and digestive system, which means individuals may experience a range of symptoms that may not seem related to one another.

Indication

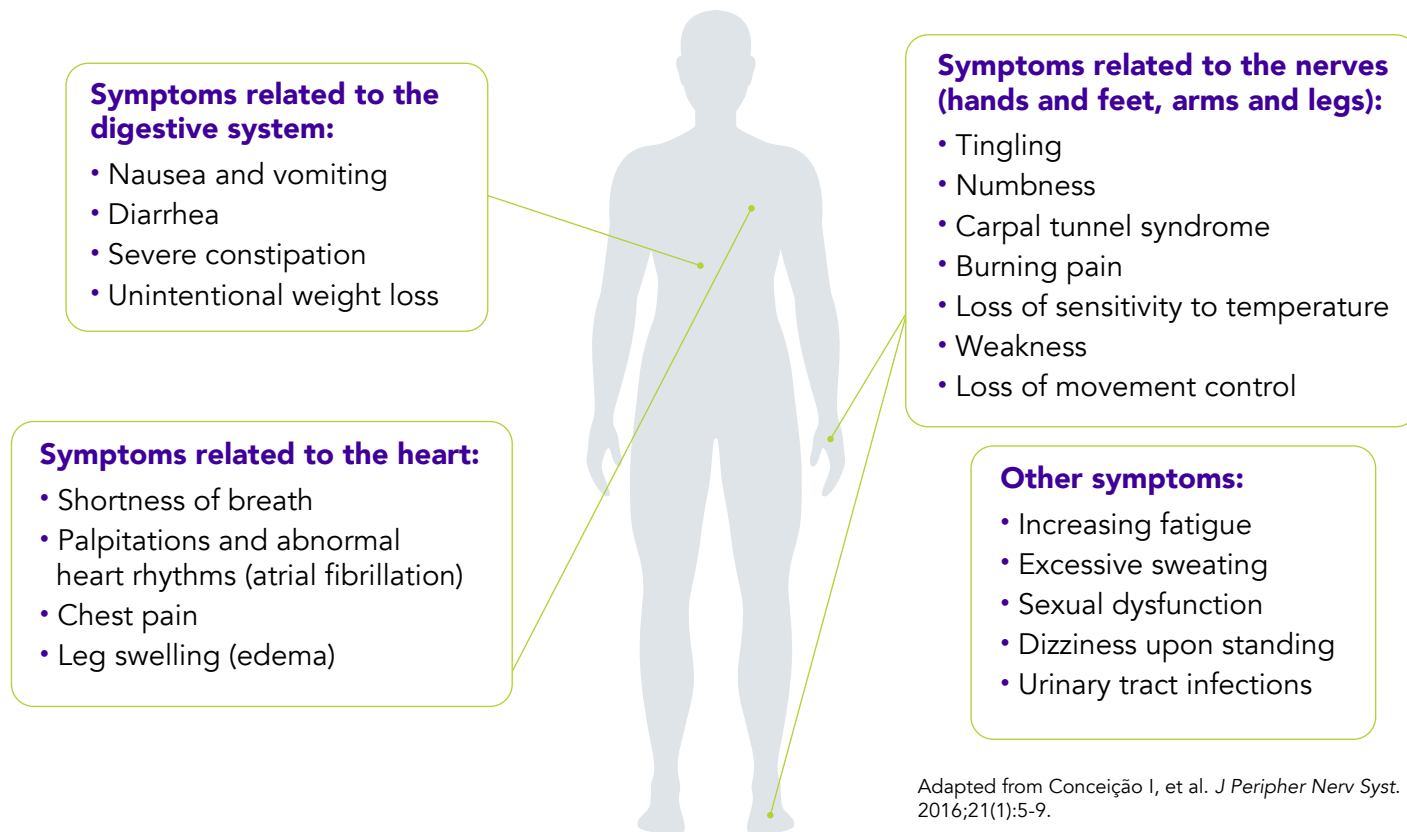
What is ONPATTRO™ (patisiran)?

ONPATTRO is a medicine that treats the polyneuropathy caused by an illness called hereditary transthyretin-mediated amyloidosis (hATTR amyloidosis). ONPATTRO is used in adults only.

- 2 Please see Important Safety Information on the following pages and accompanying Full Prescribing Information.**

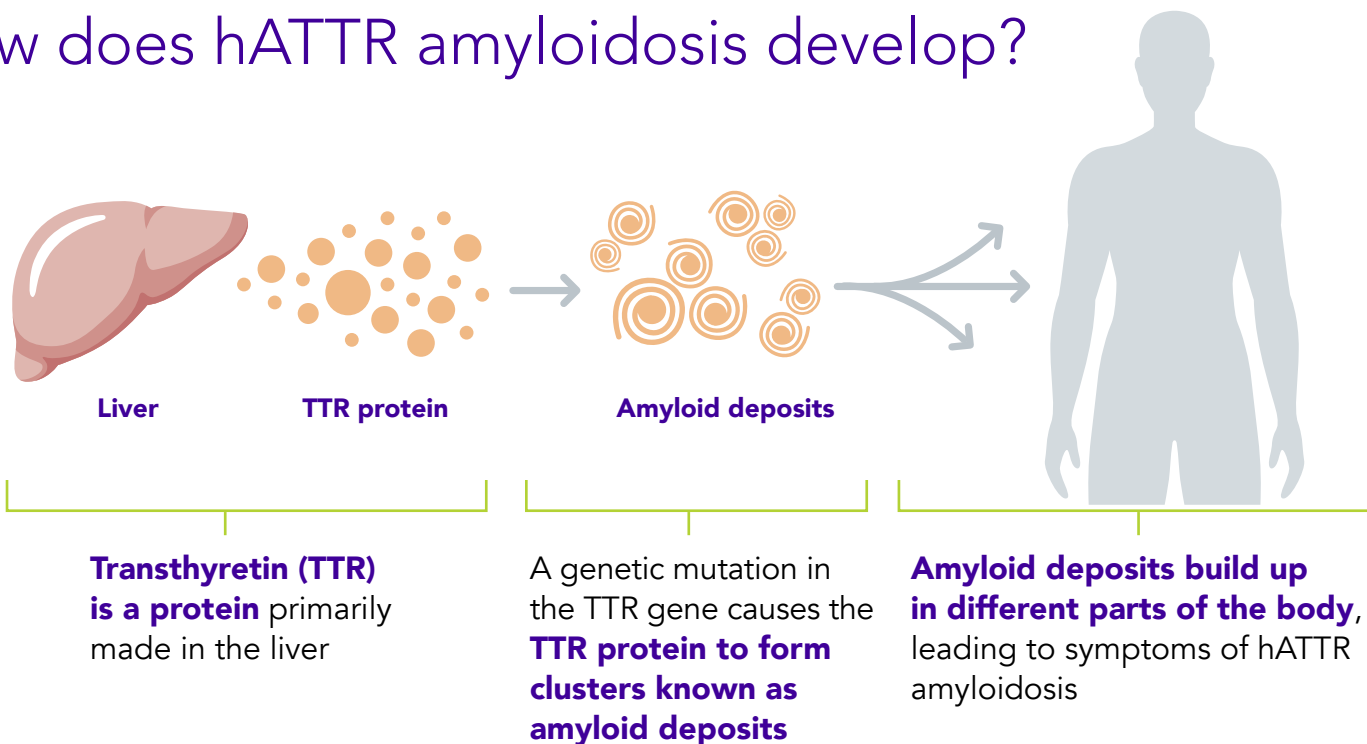
The varying symptoms of hATTR amyloidosis

This is not a comprehensive list of symptoms that may be experienced with hATTR amyloidosis. ONPATTRO™ (patisiran) does not treat all of these symptoms.



Talk to your doctor if you are experiencing any of these symptoms.

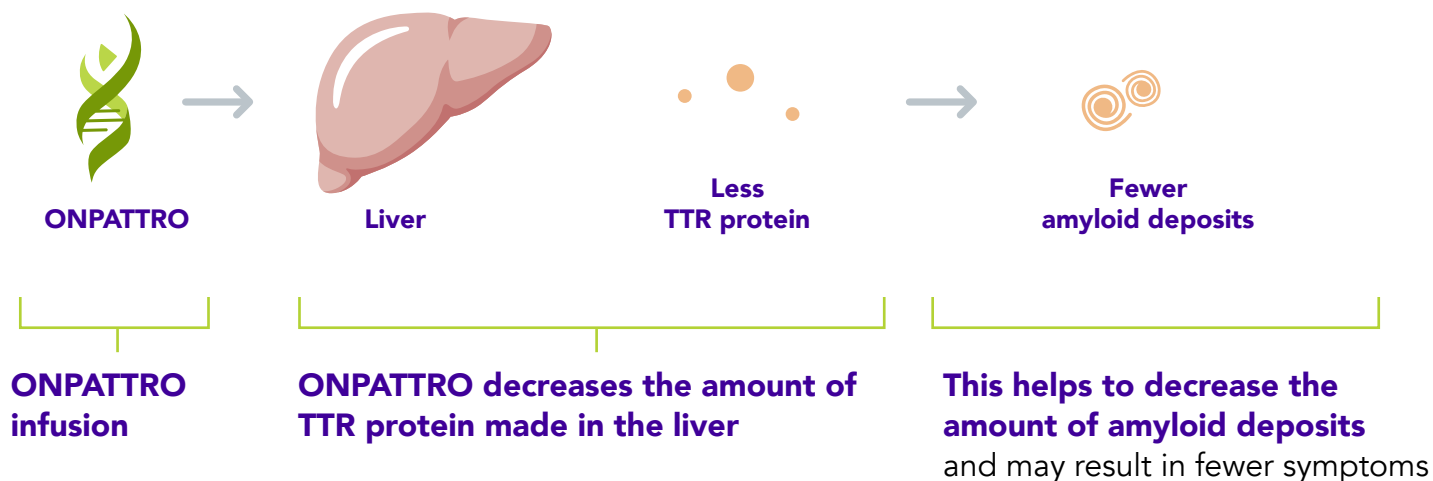
How does hATTR amyloidosis develop?



Find out more about ONPATTRO™ (patisiran) at www.onpattro.com.

- 4 Please see Important Safety Information on the following pages and accompanying Full Prescribing Information.

How does ONPATTRO™ (patisiran) work?



In a study of patients with hATTR amyloidosis, ONPATTRO was able to **reduce the amount of TTR protein by an average of 84%**.

Important Safety Information

What are the most important things I should know about ONPATTRO?

ONPATTRO can cause:

- **Infusion-related reactions**

ONPATTRO is given as a drip into a vein (called an “intravenous infusion”). Reactions to this infusion may happen during treatment with ONPATTRO. Before each infusion you will be given medicines that help to lower the chance of infusion-related reactions.

onpattro™
(patisiran) lipid complex injection

How can ONPATTRO™ (patisiran) help?

Patients receiving ONPATTRO showed improvements in multiple measures compared to those who received placebo

- ✓ **Improvement in nerve function** measured by strength, blood pressure upon standing, and response to temperature/vibration^a
- ✓ **Improvement in quality of life** measured by patients' ability to perform everyday activities such as dressing, bathing, or walking

The safety and effectiveness of ONPATTRO were evaluated in a placebo-controlled trial of 225 patients with hATTR amyloidosis with polyneuropathy. This means some patients received a placebo that did not contain medication. The effects of ONPATTRO were evaluated against the effects of placebo.

^aNerve function was measured using a 304-point scale test called the modified Neuropathy Impairment Score (mNIS)+7.

99% of eligible patients who finished the clinical study chose to participate in a separate long-term study of ONPATTRO.

6 Please see Important Safety Information on the following pages and accompanying Full Prescribing Information.

Patients treated with ONPATTRO™ also showed improvement in other measures



Decrease in symptoms such as diarrhea, constipation, dizziness, difficulty urinating, and vomiting



Better nutritional health

ONPATTRO-treated patients maintained a healthier weight than those who received placebo



Increase in walking speed

ONPATTRO-treated patients could walk faster than those who received placebo



Decrease in pain



Decreased feelings of **anxiety** and **depression**

Important Safety Information

• Infusion-related reactions, cont.

Tell your doctor or nurse right away if you experience any of the following signs of an infusion-related reaction during treatment:

- Reddening of the face or body (flushing), skin warm
- Body aches or pain, including pain in the back, neck, or joints
- Feeling sick (nausea)
- Stomach pain
- Feeling short of breath, cough, or other breathing problems
- Headache
- Chest discomfort or chest pain
- Rash
- Chills
- Dizziness
- Feeling tired (fatigue)
- Rapid heart rate
- Facial swelling

If you have an infusion-related reaction, your doctor or nurse may slow down or stop your infusion, and you may need to take other medicines. When these reactions stop, or get better, your doctor or nurse may decide to start the infusion again.

How do I receive ONPATTRO™ (patisiran)?

ONPATTRO is given by intravenous (IV) infusion once every 3 weeks by a healthcare professional in a doctor's office or an infusion center. Some patients may be eligible for infusions at their home, if covered by their insurance plan. Prior to the IV infusion, individuals will receive a combination of medications commonly used in order to reduce the risk of infusion-related reactions.

What are the possible side effects?

In the study, the most frequently occurring side effects in patients treated with ONPATTRO were respiratory infections such as colds, sinus infections, and nasal congestion, and infusion-related reactions such as flushing of skin, back pain, nausea, abdominal pain, difficulty breathing, or headache. The majority of side effects were mild to moderate in severity, although some were considered severe. Infusion-related reactions and decreased over time.

Ask your doctor, "**Is ONPATTRO right for me?**"

Important Safety Information

- **Low Vitamin A levels**

Treatment with ONPATTRO lowers the amount of vitamin A in your blood. Your doctor will tell you to take a vitamin A supplement every day. You should not take more than the amount of vitamin A recommended by your doctor.

Low vitamin A levels can affect vision. If you have problems with your vision (e.g., night blindness) while taking ONPATTRO, talk to your doctor. Your doctor may refer you to an eye specialist.

8 Please see Important Safety Information on the following pages and accompanying Full Prescribing Information.

What kind of support is available for me and my family?

Alnylam Assist™ is here to help

When you and your doctor choose to begin treatment with ONPATTRO™, the next step is to complete a Start Form together and submit it to Alnylam Assist, a comprehensive support program. This program offers personalized assistance to get you started on treatment and provide ongoing support.

Services include:



Your own personal Alnylam Case Manager who can guide you through treatment and answer any questions related to coverage for ONPATTRO on an ongoing basis



A thorough review of your health plan, which will help provide you with a better understanding of your insurance coverage



Financial assistance programs for eligible individuals^a

- Our Quick Start Program for commercially insured individuals that provides up to 3 doses at no cost while your doctor is waiting on confirmation of insurance coverage for ONPATTRO
- Through our Commercial Copay Program for commercially insured individuals, you'll pay \$0 out-of-pocket for medication costs
- Our Patient Assistance Program may be able to provide ONPATTRO at no cost for uninsured individuals or those individuals who are enrolled in a health plan but do not have coverage for ONPATTRO



Disease and treatment education for you and your family by an Alnylam Patient Education Liaison

Alnylam
ASSIST™

8AM–7PM ET, Monday–Friday
☎: 1-833-256-2748

**To learn more about
Alnylam Assist visit
www.AlnylamAssist.com.**

^a Individuals must meet specified eligibility criteria to qualify for assistance. Alnylam reserves the right to make eligibility determinations and to modify or discontinue the program at any time. Patients with Medicare, Medicaid, or other government-sponsored insurance are not eligible for Alnylam's Quick Start Program, Commercial Copay Program, or Patient Assistance Program.

What's the next step?

Ask your doctor,
"Is ONPATTRO™ (patisiran) right for me?"

Find out more about ONPATTRO at www.onpattro.com.

Important Safety Information

What are the common side effects of ONPATTRO?

The most common side effects of ONPATTRO are respiratory infections, such as colds, sinus infections, and nasal congestion, and infusion-related reactions. These are not all the possible side effects of ONPATTRO. Talk to your doctor about side effects that you experience. You are encouraged to report negative side effects of prescription drugs to the FDA. Visit www.fda.gov/medwatch, or call 1-800-FDA-1088.

Please see the accompanying Full Prescribing Information for additional information.



ONPATTRO and Alnylam Assist are trademarks of Alnylam Pharmaceuticals, Inc.
© 2018 Alnylam Pharmaceuticals, Inc. All rights reserved. TTR02-USA-00038-042018

